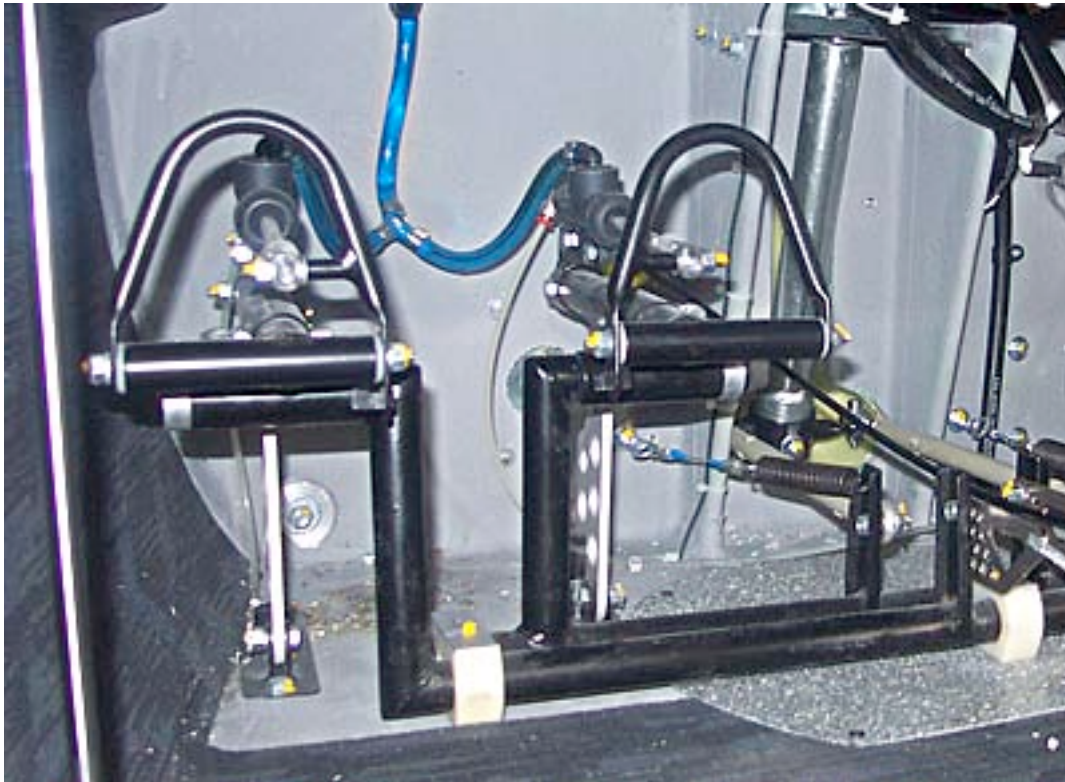


TL-ULTRALIGHT STINGSPORT

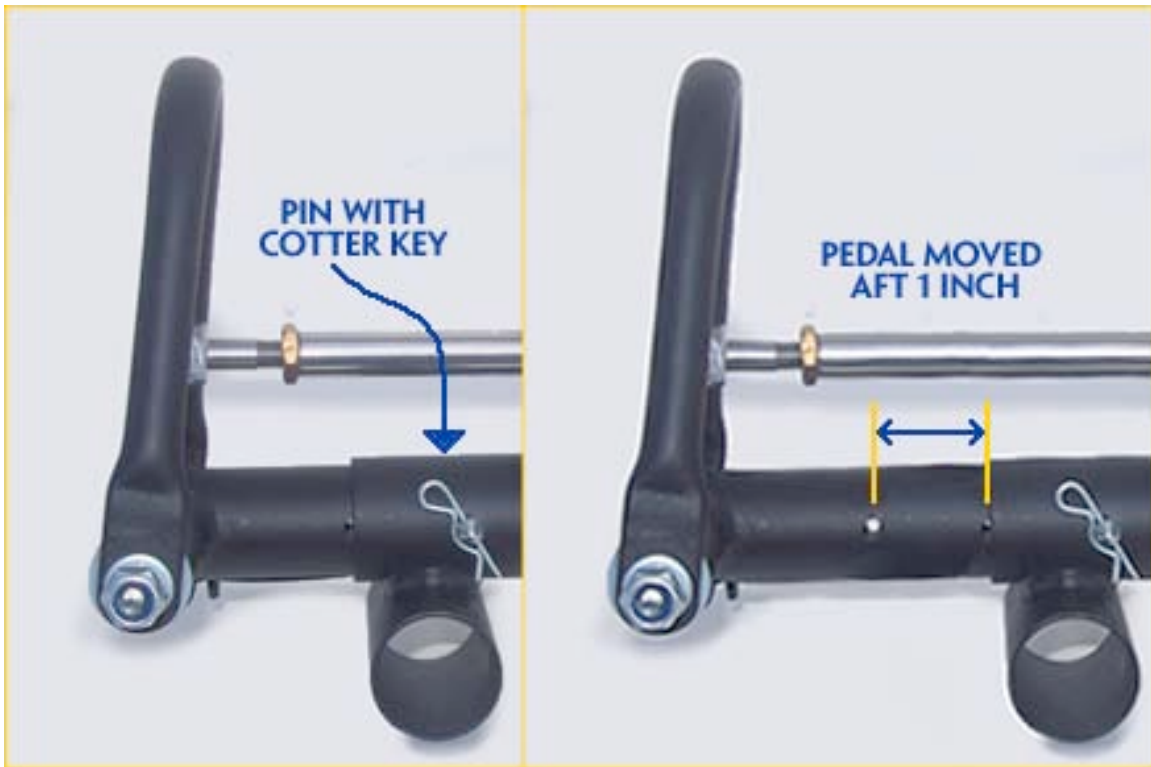
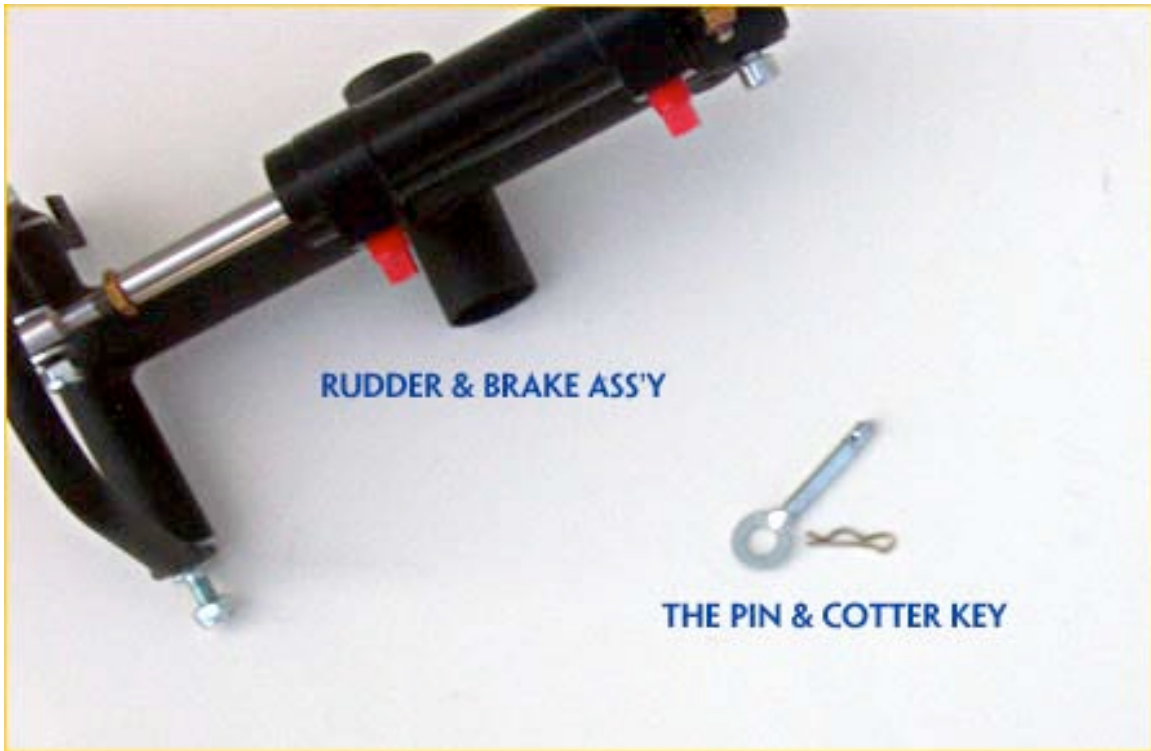
How To Adjust The Rudder Pedals

The rudder pedals can be adjusted fore and aft a distance of 4" to accommodate the leg lengths of individual pilots. Each rudder pedal is held in position by a pin and cotter key.



RUDDER (AND BRAKE) PEDALS AS INSTALLED

The adjustment is made by sliding each rudder pedal fore or aft as shown in the photos below, and locking it in place by inserting the pin in matching holes in the mating tubes.



To adjust the rudder pedal:

1. Remove the cotter key.
2. Remove the pin.
3. Slide the pedal and tube forward or aft to the desired length.
4. Align holes in mating tubes.
5. Re-insert the pin.
6. Re-insert the cotter key.